



IMPACT REPORT

SESSION 2025/26



THE YEAR *IN NUMBERS*

(1 JULY 2025 - 30 APRIL 2026)

STUDENT VOICE

5.2k

Total votes cast in the Student Elections giving a turnout of 17% (UK-campus based students)

140

Student Council Attendees discussing issues such as use of AI, academic integrity, student spaces, University review and redundancies.

486

Programme Reps Registered with an increase in completing training and forum attendance

12

Student Forums hosted for Programme Reps, Sports Committees and Society Committees.

EVENTS

103

Total events hosted including 39 Welcome Week events, 8 Feel Fab Feb events, and the launch of a new "Settle Week".

8.5k

Total event attendees at multiple venues, including on-campus, EUSA spaces, The Three Sisters, and EICC.

620

Sports & Socs Awards Ball Tickets Sold including 597 students plus VIPs. Tickets sold out in record time.

192

Submissions for Napier Student Film Festival with 29 being selected for participation in the festival.

FREEBIES

2k+

Packs of condoms distributed through the C-Card scheme at ENSA offices and stalls.

1.9k

ENSA-branded merch items given out including caps, keyrings, pens, lanyards and totebags.

“

As a returning student who has attended the Welcome Fair for the past two years, I can confidently say it's one of the best parts of the university experience.

Welcome Week Survey Feedback

THE YEAR *IN NUMBERS*

EMPLOYABILITY

55 **Student volunteers**
including Welcome Week, Film Festival,
and Sports & Societies Committee
Volunteers.

8 **Paid internships**
with the introduction of 3 new Academic
Reps (one for each campus), content
creators and events assistants.

5 **Student placements**
with 1 photography placement, and 4
students working on an ENSA project as
part of the Collaborative Practice Module.

300 **Student attendees**
at our Part-Time Job and
Volunteering Fairs held in
September and January.

COMMUNICATIONS

76k **Website Visits**
generating 347,667 page views
at napierstudents.com

12.9k **Facebook followers**
with 247,714 views
and 1,300 interactions.

6.5k **Instagram followers**
with 2.3 million views and
34,300 interactions.

1.8k **LinkedIn followers**
with 74,676 impressions and
955 reactions.

CAMPAIGNS

£21k **Raised for Charities**
by our students, clubs and
societies, including £15k
raised for Movember UK.

64 **Participants in Uniforce**
a sustainability project challenge that
brought together students from
5 Scottish universities.

30 **Blood donations on campus**
during a visit by the Scottish
National Blood Transfusions Service.

3 **Campus Swap Shops launched
(one per campus)**
letting students and staff take whatever
they need and donate whatever they can.

FOCUS ON *SPORTS & SOCIETIES*



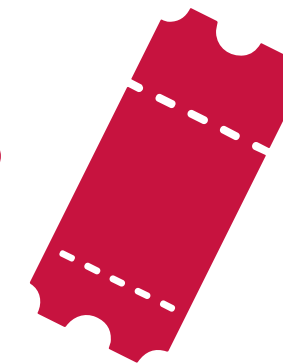
9 VARSITY CUP WINS IN A ROW
 Edinburgh Napier defeated QMU 10-3 to retain the Varsity Cup



15 SOCIETY PERFORMANCES
 Including Chamber Choir, Drama, Musical Theatre and Orchestral



110 CLUB/SOCIETY HOSTED EVENTS
 Sold via ENSA's partner ticket platform, Native



300 TRAINING ATTENDEES
 At Sports & Societies Committee Events



BUGS*

3 LEAGUE WINNERS
 American Football, Men's Football and Badminton

1 CUP FINALIST
 Men's Hockey Club

* British Universities & Colleges Sport

11 BRAND NEW SPORTS CLUBS & SOCIETIES LAUNCHED

Boxing, Swimming, 93% Club, Eastern European, Afro x Asian, Social Sciences, Music Culture, Grace & Growth, Irish, Napier Action Group, and Plant-Based Universities.

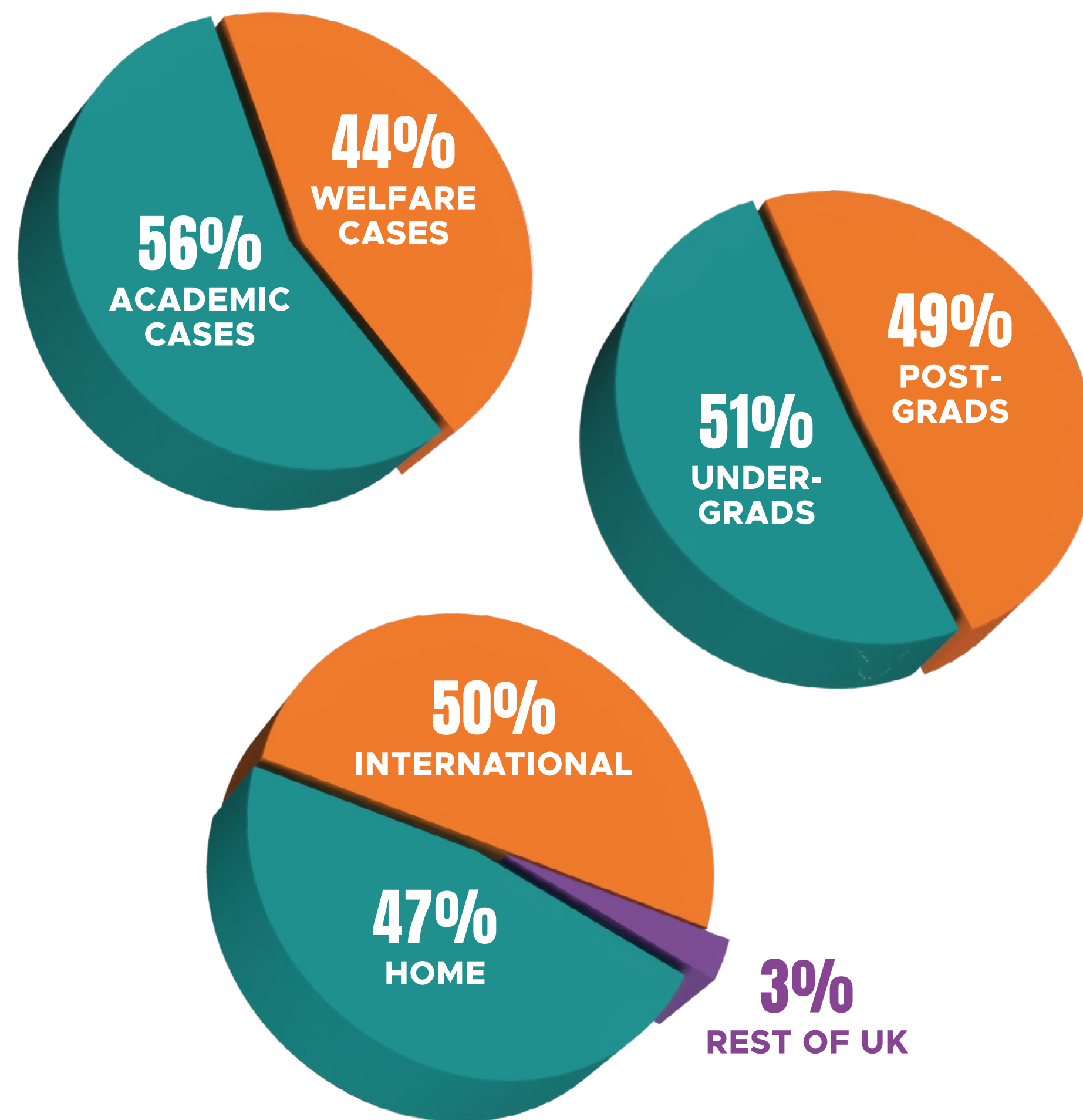
FOCUS ON *ENSA ADVICE*

784 **ADVICE QUERIES**

673 **ADVICE CASES**

Top three reasons students approached the Advice Team:

- 1 Academic misconduct
- 2 General course queries
- 3 Financial hardship



“ The ENSA Advice team were extremely helpful and supportive throughout a difficult process. They provided clear guidance, reassurance, and practical advice at every stage, which made a stressful situation much easier to manage.

I felt listened to and supported, and their professionalism gave me confidence to move forward. Their help made a real difference to my student journey, and I am very grateful for the time and care they gave me.

ENSA Advice Client Feedback

FOCUS ON *FINANCE*

The majority of our income comes from Edinburgh Napier University. In 2024/25 we received a total of £641,0786. Our annual accounts for 24/25 were signed off at the ENSA AGM in March, and expenditure is shown in the table opposite.

In the current financial year, 2025/26, our block grant was £681,584.

In addition to the funds received from the University, we generate a modest amount of commercial income through media sales and corporate sponsorships.

Any surplus goes towards our reserves to make us more resilient.

Expenditure 2024/25

Advice	£101,292	13%
Central *	£230,520	31%
Communications	£86,778	12%
Democracy	£131,713	17%
Welcome Week & Social	£107,727	14%
Governance	£8,722	1%
Sports & Societies	£86,611	11%
	Total	£753,363
	Surplus	£105,119

**includes office staff, insurance, IT, etc.*

THE YEAR *IN PHOTOS*



Varsity 2026



Uniforce Awards Ceremony



Welcome Week Postgrads' Brunch



Club of the Year at the Awards Ball - Netball



Welcome Back Week Culture Crawl



Welcome Fest



Society of the Year at the Awards Ball - Formula Student

THE YEAR *IN PHOTOS*



Election Winners - Emeka, Blessing and Austen



Napier Student Film Festival



League Winners - Napier Knights



Puppy Yoga



Societies at Welcome Fair



Tree Lighting Fest



Sports & Societies Committee Conference